



Comparative Pharmacognostical and Phytochemical Analysis of *Moringa oleifera* and *Moringa concanensis*

Shashikala Metri^{1*}, Kadir Alam², Kavya Thode¹, Parthsarathi Tirupati¹, Ceema Mathew³

¹Department of Pharmacognosy, Gokaraju Rangaraju College of Pharmacy, Bachupally, Hyderabad, Telangana 500090, India.

²Department of Clinical Pharmacology and Therapeutics, B. P. Koirala Institute of Health Sciences, Dharan 56700, Nepal.

³Department of Pharmaceutical Analysis, Gokaraju Rangaraju College of Pharmacy, Bachupally, Hyderabad, Telangana 500090, India.

ABSTRACT

Moringa oleifera and *Moringa concanensis*, belong to the family of *Moringaceae* and are well-known as the drumstick tree. *Moringa oleifera* is a miracle tree, that people have been using for centuries due to its health benefits. *Moringa concanensis* locally known as Kattumurungai is also one of the important medicinal plants. Like *Moringa oleifera*, this plant is also used to treat skin tumors, fatigue, high blood pressure, jaundice, and diabetes. The present study involved the comparative pharmacognostic and phytochemical evaluation of these two species. The preliminary phytochemical analysis of both species showed the presence of alkaloids, glycosides, flavonoids, steroids, and tannins including carbohydrates, proteins, and lipids. The maximum percentage yield was found in *Moringa oleifera*. The physicochemical parameters like ash values and extractive values were found to be maximum in *Moringa oleifera*. The thin layer chromatography (TLC) of the methanolic extract was performed for three important phytochemicals such as alkaloids, steroids, and flavonoids. Both species showed the presence of prominent spots on TLC plates. Among these spots, some of them had similar R_f values, but some of them with different R_f values indicating the presence of similar and different alkaloids, steroids, and flavonoids respectively. Determination of total flavonoid and total phenolic content was also carried out using the Folin Ciocalteu and Aluminum Chloride methods respectively. *Moringa oleifera* was found to contain 453 µg/ml of total phenols and 365 µg/ml of total flavonoids and were maximum compared to *Moringa concanensis*. These findings suggest that *Moringa concanensis* shares some similar macroscopical and phytochemical characteristics as that of *Moringa oleifera* but is very similar in the types of alkaloids, steroids, and flavonoids. Further study has to be done to identify these particular spots using reference standards.

Key Words: *Moringa concanensis*, *Moringa oleifera*, Phytochemical study, Thin layer chromatography (TLC)

eJPPR 2024; 14(3):1-8

HOW TO CITE THIS ARTICLE: Metri Sh, Alam K, Thode K, Tirupati P, Mathew C. Comparative Pharmacognostical and Phytochemical Analysis of *Moringa oleifera* and *Moringa concanensis*. Int J Pharm Phytopharmacol Res. 2024;14(3):1-8. <https://doi.org/10.51847/saRjESRlIE>

INTRODUCTION

The *Moringaceae* family includes various species of *Moringa* among which *Moringa oleifera* (MO) and *Moringa concanensis* (MC) are two unique species. Each possesses unique botanical characteristics, phytochemical profiles, and traditional uses. The species have gained

attention for their diverse array of bioactive compounds and potential health benefits, contributing to their recognition as valuable resources in various fields [1, 2]. *Moringa oleifera* is a well-known plant. It is often referred to as the "drumstick or miracle plant" and is native to Pakistan, Afghanistan, India, and Bangladesh [3, 4]. Renowned for its adaptability to different climates,

Corresponding author: Shashikala Metri

Address: Department of Pharmacognosy, Gokaraju Rangaraju College of Pharmacy, Bachupally, Hyderabad, Telangana 500090, India.

E-mail: ✉ shashimetri@rediffmail.com

Received: 23 February 2024; **Revised:** 25 May 2024; **Accepted:** 27 May 2024

This is an **open access** journal, and articles are distributed under the terms of the Creative Commons Attribution-Non Commercial-ShareAlike 4.0 License, which allows others to remix, tweak, and build upon the work non-commercially, as long as appropriate credit is given and the new creations are licensed under the identical terms.



Moringa oleifera is celebrated for its rich nutritional content, including vitamins, minerals, antioxidants, and essential amino acids. The plant's leaves, seeds, and other parts have been traditionally utilized in herbal medicine and culinary practices [5, 6].

On the other hand, *Moringa concanensis* is one of the lesser-known plants. It is a wild variety of moringa commonly known as the "West Indian *Moringa*", "Monga," or Kattumurugai and is native to the Western Ghats of India. While sharing the genus with *Moringa oleifera*, *Moringa concanensis* exhibits distinct botanical features and a unique chemical composition [7, 8].

Both species have been recognized for their potential medicinal properties and are being used in traditional medicine by local communities [9-11].

As we explore the comparative aspects of *Moringa oleifera* and *Moringa concanensis* it becomes evident that these plants offer a fascinating juxtaposition in terms of geographical distribution, morphological characteristics, and ethnobotanical significance. The species contains various phytoconstituents such as terpenoids, alkaloids, tannins, steroidal aglycones, and reducing sugars in different parts such as leaves, bark, flowers, seeds, roots, and pods [12, 13]. The species have been shown to exhibit anti-urolithic [14], antimicrobial [15], anti-bacterial [8, 16, 17], analgesic, anti-inflammatory [18-20], antioxidant [21-23], anti-diabetic [24, 25], hepatoprotective [26] and more activities. In the present study, we focused on comparing various pharmacognostic parameters including identification of phytochemicals, determination of physicochemical parameters, TLC of the extracts, and determination of total phenolic and flavonoid content of leaves of *Moringa oleifera* and *Moringa concanensis*.

MATERIALS AND METHODS

The plants, *Moringa oleifera* (MO) and *Moringa concanensis* (MC) were collected from the agricultural field near Miyapur, Hyderabad, and identified and authenticated by a botanist, Govt. Degree College, Kukatpally, Medchal district, Hyderabad.

Macroscopic study

The collected plant material of MO and MC were subjected to evaluation of morphological and organoleptic characters.

Preparation of the extract

The leaves were separated and were dried at room temperature under shade, by spreading on the filter paper and ground into coarse powder in a grinder. 250 gm powdered coarse material was extracted with methanol using a Soxhlet apparatus for 2 hrs. Then the extract was concentrated by evaporating in a water bath and the %

yield was calculated [27]. The extract was subjected to various qualitative and quantitative analyses.

Preliminary phytochemical study

Detection of sugars

Molisch's test

After treating the extract with an alcoholic α -Naphthol solution, conc. sulfuric acid was applied from the test tube's sides. The presence of sugars is indicated by the creation of a reddish-violet ring.

Fehling's test

The extract was hydrolyzed with dilute hydrochloric acid and Fehling's A and B solution were added. After heating the formation of a reddish brown colour indicates the presence of reducing sugars.

Detection of proteins

Biuret test

The extract was treated with a few ml of Biuret reagent. The pink or purple color obtained after heating the solution indicates the presence of proteins.

Ninhydrin test

To the extract few ml of Ninhydrin reagent was added and heated in a water bath. The presence of pinkish-red color shows the presence of proteins.

Detection of fixed oils and fats

Small quantities of extract were rubbed between the two filter papers and checked for oil stains [28, 29].

Detection of saponins

Froth test

0.1 gm plant powder was vigorously shaken with a few ml of distilled water for five min and was allowed to stand and checked for froth after 15 minutes.

Detection of flavonoids

Shinoda test

A small amount of magnesium ribbon pieces and a small amount of concentrated hydrochloric acid were added to the extract. The development of the magenta hue denotes a favorable response to flavonoids.

Alkali test

The extract was treated with a dilute ammonia solution and the ammonia layer acquired a yellow colour showing the presence of the flavonoid.

Detection of steroids

Salkowski test

Few drops of conc. sulphuric acid was added to the chloroform extract and observed for the red color or golden

yellow color in a lower layer which indicates the presence of the sterols or triterpenes respectively [30].

Liebermann–Buchard's test

To the chloroform extract few drops of acetic anhydride were added followed by the addition of 1ml of conc. sulphuric acid from the sides of the test tube [31].

Keller-Kiliani test

To the extract, 3 ml of acetic acid and a few drops of ferric chloride were added and this mixture was transferred to a test tube containing conc. sulphuric acid. A reddish brown ring turns bluish green indicating the presence of deoxy sugars.

Detection of alkaloids

Dragendroff's reagent test

To the extract few drops of Dragendroff's reagent were added and a reddish brown ppt indicates the positive test alkaloids.

Hager's reagent test

To the extract, a few drops of Hager's reagent were added and the formation of the yellow ppt is an indication of the presence of alkaloids [32].

Detection of tannins

Ferric chloride test

The methanolic extract was shaken with water and filtered. the filtrate was treated with an aqueous solution of ferric chloride appearance with a blue or brownish-green color indicating the presence of tannins.

Lead acetate test

The extract was shaken with water and treated with 10% lead acetate. The creamy yellow ppt or white ppt shows the presence of tannins [33-35].

Determination of physicochemical parameters

MO and MC samples were subjected to various physicochemical parameters as follows [36, 37].

Total ash value

About 2 g of the powder drug was added to the previously weighed silica crucible and ignited at the temperature of 500- 600° C in a muffle furnace (Proto-tech, Mumbai) until white color ash was obtained. The crucible was reweighed and % of total ash content was calculated on a dried basis.

Acid-insoluble ash

To the total ash, 25ml of dilute HCL was added and boiled gently. It was filtered through ashless filter paper and the residue left on the filter paper was washed with hot water until the filtrate showed neutral. Then the insoluble residue

was burned to constant weight and reweighed. Acid-insoluble ash content was calculated.

Alcohol-soluble extractives

5 gm of the powdered drug was macerated with 100 ml of 90% alcohol and kept for 24 hrs with frequent shaking for 6 hrs. After 18 hr of standing, it was filtered and 25 ml of the filtrate was evaporated to dryness in preweighed porcelain, and the percentage content of alcohol-soluble extractive value was calculated based on the air-dried plant material.

Water soluble extractives

Chloroform water was used to determine water-soluble extractives following the same procedure mentioned under alcohol-soluble extractives instead of 90% alcohol.

Determination of petroleum ether soluble extractive values

The same procedure was followed as mentioned under alcohol-soluble extractive value. Petroleum ether was used instead of 90% alcohol.

Thin layer chromatographic study (TLC)

TLC was performed on the handmade Silica gel G plates. Using mobile phases, Toluene: Methanol (9:1) (Steroids), Toluene: Diethylamine: Ethyl acetate : (7:1:2) (Alkaloids), and Ethylacetate: Glacial acetic acid: Formic acid: Water (100:11:11:20) (Flavonoids) for the development of plates.

Preparation of sample

About 1 mg of extract of the MO and MC were dissolved in methanol for alkaloids, for flavonoids extract was dissolved in 80% methanol and for steroids, petroleum ether was used to dissolve the extract and applied on the TLC plates.

After the spotting of the sample, the plates were kept in the mobile phase and the spots were viewed in the UV chamber at 245nm or 365nm. The Rf values were calculated by dividing the distance traveled by the sample by the distance traveled by the solvent [38-40].

Determination of total phenol content

A standard calibration curve was made with Gallic acid. From the stock solution (100 µg/ml) of gallic acid, the different concentrations (10 - 50 µg/ml) were prepared 1 ml solution of each concentration was pipetted into a volumetric flask and diluted with 3 ml of distilled water. Then 0.5 ml of phenol reagent was added followed by the addition of 2 ml of Na₂CO₃ (2%) in each volumetric flask. The final volume was adjusted to 10 ml with distilled water. Absorbance was measured using a UV-visible spectrophotometer at 765 nm (Shimadzu UV-1800, Japan) against blank, containing distilled water.

For the sample preparation, 100mg of MO and MC extracts were dissolved in 50 ml of 50% methanol in separate test tubes and filtered. One ml of each filtrate was pipetted in a 10 ml volumetric flask and proceeded with similar steps as mentioned in the preparation of the standard solution. Estimation of total phenols was done based on the calibration curve of Gallic acid [41].

Determination of total flavonoid content

Total Flavonoid Content was determined by the Aluminum chloride method using Quercetin to make a standard calibration curve. The different concentrations (10-50 µg/ml) were prepared from the stock solution (100 µg/ml) of quercetin. 1 ml from each of the solutions was pipetted out in a volumetric flask and 0.2 ml of 10% aluminum chloride, 3 ml of 95% methanol, and 0.2 ml of potassium acetate (1 M) were added and mixed well. Finally, the

solutions were diluted to 10 ml with distilled water and kept at room temperature for 30 minutes. The absorbance of the resulting solutions was measured with a UV spectrophotometer at 415 nm.

For the sample preparation, 100mg of MO and MC extracts were dissolved in 80% methanol and 1 ml of each was pipetted in 10 ml of a volumetric flask and proceeded with similar steps as mentioned in the preparation of the standard solution. Estimation of total flavonoid was done based on the calibration curve of quercetin [42].

RESULTS AND DISCUSSION

Morphological and organoleptic characters of *Moringa oleifera* (Figure 1a) and *Moringa concanensis* (Figure 1b) are given in Table 1.

Table 1. Morphological and organoleptic characters

Macroscopic characters	<i>Moringa oleifera</i>	<i>Moringa concanensis</i>
Leaves	Tripinnately compound	BIpinnately compound
Shape	Oval	Obovate
Size	1.4-5 cm	2.2-5 cm
Texture	Smooth to touch	Hard to touch
Fruits	Long, slender, and green	Long and slender and green with brownish tinge
Color	Light green colour	Dark green colour
Odour	Unpleasant odour	Unpleasant odour
Taste	Bitter	Bitter



a)



b)

Figure 1. a) *Moringa oleifera*, b) *Moringa concanensis*

Preliminary phytochemical study

The medicinal and therapeutic activity of the plant is due to the presence of various phytochemicals and preliminary phytochemical study will help in the identification of these bioactive groups. In this study, the extract of *Moringa oleifera* and *Moringa concanensis* showed the presence of carbohydrates, lipids, proteins alkaloids, flavonoids, tannins, saponins, and steroids. However, the Kellar-Kiliani test was positive in *Moringa oleifera* and negative in the case of *Moringa concanensis*.

Physicochemical study

Physicochemical parameters are rarely constant but very important for the evaluation of medicinal plants as they indicate their identity, purity, and quality [43]. Ash values represent the inorganic content naturally present or adhering or deliberately added to it, as a form of adulteration. Extractive values are indicative of the approximate content of chemical constituents [28, 37]. The extract was subjected to various physicochemical parameters and results are given in Table 2. The Ash values and extractive values were found to be maximal in MO than MC. The alcohol extractive values were found to

be maximum followed by water and petroleum ether extractive values in both MO and MC.

Table 2. Physicochemical parameters

Physicochemical parameters	%w/w±SD (*n=3)	
	<i>Moringa oleifera</i>	<i>Moringa concanensis</i>
Total ash	4.5±0.42	3.5±0.23
Acid insoluble ash	1.1±0.22	0.8±0.35
Water soluble extractives	18.7±0.39	16.5±0.43
Alcohol soluble extractives	27.2±0.13	25.5±0.26
Petroleum ether-soluble extractives	5.3±0.21	4.9±0.32

Note, *n= number of readings

Thin layer chromatographic study

TLC study is one of the simple methods in the identification of phytochemicals as it gives the fingerprint of constituents present in the drug sample. Based on the results one can have an idea about the isolation of phytoconstituents [44]. It has a number of benefits, including as reducing analysis time and sample cost and able to analyse numerous samples at once with a small amount of mobile phase [45, 46]. TLC coupled with various analytical detection systems can be effectively used for qualitative and quantitative separation of various crude mixtures [47].

TLC analysis of *Moringa oleifera* and *Moringa concanensis* was carried out in three solvent systems Toluene: Methanol (9:1), Toluene: Diethylamine: Ethyl acetate: (7:1:2) and Ethylacetate: Glacial acetic acid: Formic acid: Water (100:11:11:20) which are specific for the separation of steroids, alkaloids and flavonoids and

results are given in **Table 3**. For steroids, *Moringa oleifera* gave 4 spots with brownish to pink color fluorescence, and *Moringa concanensis* gave 6 spots with pinkish fluorescence under UV 365nm (**Figure 2**), and in visible light, both species were found to show light brown to greenish color spots, but 3 spots were observed in MO and 4 in MC.

For alkaloids, both the extracts of MO and MC gave 4 spots under UV 365nm with pink color fluorescence (**Figure 3**) and in visible light, 5 spots of light brown to green color were observed in both the species having the same Rf values.

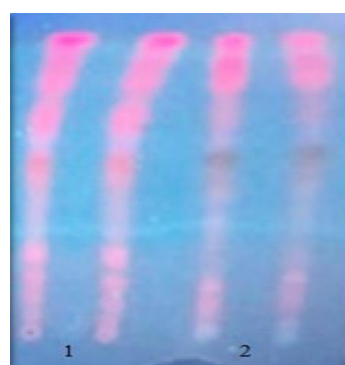
For flavonoids, *Moringa oleifera* gave 8 spots and *Moringa concanensis* gave 5 spots with blue, pink, and purplish fluorescence under UV 365nm (**Figure 4**), and in visible light, 3 spots of light brown to greenish color were observed in both species.

Table 3. TLC study of MO and MC

Phytochemical groups	Rf values	
	MC	MO
Steroids (Figure 2)	0.16, 0.28, 0.32, 0.44, 0.59, 0.76, 0.85 (7)	0.24, 0.28, 0.40, 0.73, 0.83 (5)
Alkaloids (Figure 3)	0.54, 0.59, 0.70, 0.82 (4)	0.54, 0.59, 0.69, 0.82 (4)
Flavonoids (Figure 4)	0.12, 0.55, 0.66, 0.80, 0.92 (5)	0.17, 0.23, 0.27, 0.34, 0.45, 0.66, 0.80, 0.92 (8)



a)



b)

Figure 2. TLC of steroids: a) In developing chamber, b) Under UV 365nm
 Track 1: *Moringa concanensis*, track 2: *Moringa oleifera*

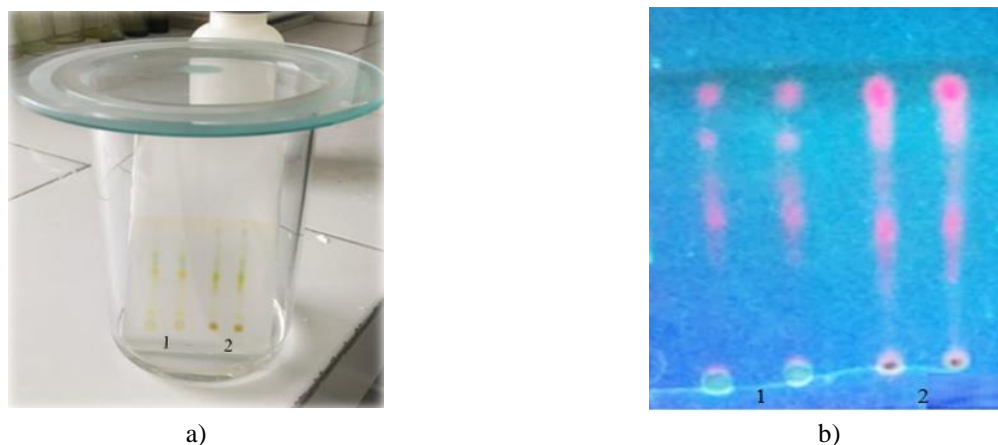


Figure 3. TLC of alkaloids: a) In developing chamber, b) Under UV 365nm
Track 1: *Moringa concanensis*, track 2: *Moringa oleifera*

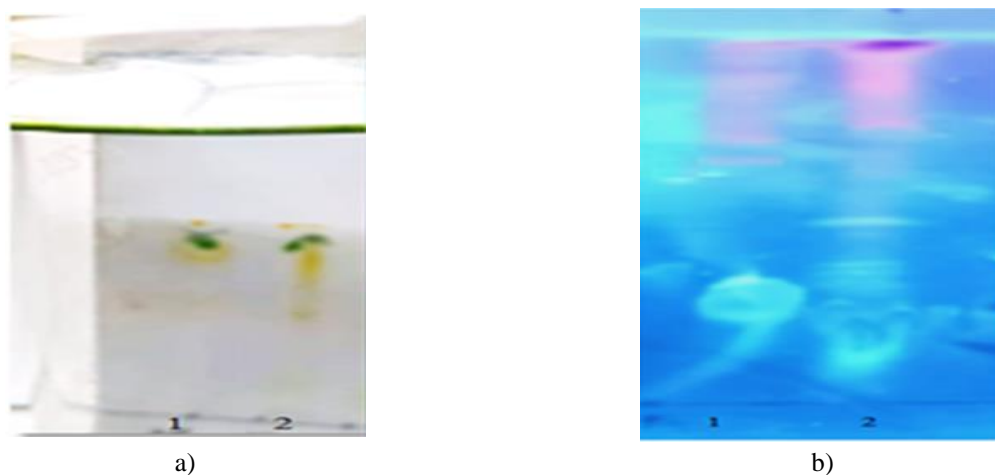


Figure 4. TLC of flavonoids: a) In developing chamber, b) Under UV 365nm
Track 1: *Moringa concanensis* track 2: *Moringa oleifera*

Total phenols and total flavonoid content

The phenols and flavonoids are most abundant phenolic compounds found in the plants. It is necessary to quantify the presence of these metabolites in the plants as they possess wide array of pharmacological activities such as anti-inflammatory, antibacterial, anticancer antioxidant etc [41, 42]. Total Phenols and total flavonoid was determined using Folin Ciocalteu's reagent method and Aluminium chloride method in the extract respectively.

The standard calibration plot of Gallic acid and Quercetin was constructed in the concentration range of 10-50 µg/ml. The co-efficient of determination (R^2) was found to be 0.991 and 0.998 for gallic acid and quercetin respectively. The extract of MO found to contain maximum total phenols and flavonoids compared to the MC. MO found to contain 453 µg/ml of total phenols and 365 µg/ml of total flavonoids and MC was found to contain 393 µg/ml and 263 µg/ml of total phenols and total flavonoids respectively.

CONCLUSION

Moringa oleifera and *Moringa concanensis*, are the two important species of genus '*Moringa*'. *Moringa oleifera* has been studied extensively for its phytochemical content and pharmacological activities than *Moringa concanensis*. Thus the present was carried out to compare these two species. It is concluded that the phytochemicals identified in both species were similar except the some. The phenols and flavonoids were found to be abundant in both species which are responsible for the antioxidant activity. Further study has to be done to isolate the active constituents of *Moringa concanensis* and evaluate their biological activities which will help treat the diseases.

Acknowledgments: We are thankful to the institution and management of Gokaraju Rangaraju College of Pharmacy, Hyderabad, for providing lab facilities.

Conflict of interest: None

Financial support: None

Ethics statement: None

REFERENCES

- [1] Fahey WJ. *Moringa oleifera*: A review of the medical evidence for its nutritional, therapeutic, and prophylactic properties. Part1. *Trees life J*. 2005;1(5):1-24.
- [2] Mahmood KT, Mugal T, Haq IU. *Moringa oleifera*: A natural gift – A review. *J Pharm Sci Res*. 2010;2(11):775-81.
- [3] Sharifudin SA, Fakurazi S, Hidayat MT, Hairuszah I, Moklas MA, Arulselvan P. Therapeutic potential of *Moringa oleifera* extracts against acetaminophen-induced hepatotoxicity in rats. *Pharm Biol*. 2013;51(3):279-88.
- [4] Mownica U, Yashodhara V. Preliminary phytochemical screening and TLC Investigation of aqueous extract of *moringa oleifera* leaves. *Trends Biosci*. 2017;10(19):3620-2.
- [5] Varmani SG, Garg M. Health benefits of *Moringa oleifera*: A miracle tree. *Int J Food Nutr Sci*. 2012;3(3):111-7.
- [6] Farooq A, Umer R. Physicochemical characteristics of *Moringa oleifera* seeds and seed oil from a wild provenance of Pakistan. *Pakistan J Bot*. 2007;39(5):1443-53.
- [7] Singh A, Mishra JN, Singh SK. Pharmacological importance of *Moringa concanensis* Nimmo leaf: An overview. *Asian J Pharm Clin Res*. 2019;12(2):27-31.
- [8] Balamurugan V, Balakrishnan V. Evaluation of phytochemical, pharmacognostical and antimicrobial activity from the bark of *moringa concanensis* nimmo. *Int J Curr Microbiol App Sci*. 2013;2(4):117-25.
- [9] Anwar F, Latif S, Ashraf M, Gilani AH. *Moringa oleifera*: A food plant with multiple medicinal uses. *Phytother Res*. 2007;21(1):17-25.
- [10] Saucedo-Pompa S, Torres-Castillo JA, Castro-López C, Rojas R, Sánchez-Alejo EJ, Ngangyo-Heya M, et al. *Moringa* plants: Bioactive compounds and promising applications in food products. *Food Res Int*. 2018;111:438-50.
- [11] Anbazhakan S, Dhandapani R, Anandhakumar P, Balu S. Traditional medicinal knowledge on *moringa concanensis* nimmo of perambalur district, tamilnadu. *Anc Sci Life*. 2007;26(4):42-5.
- [12] Abd Rani NZ, Husain K, Kumolosasi E. *Moringa* genus: A review of phytochemistry and pharmacology. *Front Pharmacol*. 2018;9:108.
- [13] Krupa J, Murugan R, Gangapriya P, Amalraj S, Gurav S, Sam Arulraj M, et al. *Moringa concanensis* Nimmo. seed extracts as a potential source of bioactive molecules, antioxidants and enzyme inhibitors. *J Food Meas Charact*. 2022;16(5):3699-711.
- [14] Ali H, Nadeem A, Anwaar M, Jabeen Q. Evaluation of antiurolithiatic potential of *moringa oleifera* seed extract. *Biomed J Sci Tech Res*. 2021;36(5):28889-95.
- [15] Padla EP, Solis LT, Levida RM, Shen CC, Ragasa CY. Antimicrobial isothiocyanates from the seeds of *Moringa oleifera* Lam. *Z Naturforsch C J Biosci*. 2012;67(11-12):557-64.
- [16] Santhi K, Sengottuvel R. Antibacterial activity of methanolic extracts of *Moringa concanensis* nimmo. *Int J Pharm Bio Sci*. 2016;7:61-5.
- [17] Farooq B, Koul B. Comparative analysis of the antioxidant, antibacterial and plant growth promoting potential of five Indian varieties of *Moringa oleifera* L. *S Afr J Bot*. 2020;129(3):47-55.
- [18] Jaybharathi M, Chitra M. Evaluation of anti-inflammatory, analgesic and antipyretic activity of *Moringa concanensis* nimmo. *J Chem Pharm Res*. 2011;3(2):802-6.
- [19] Cáceres A, Saravia A, Rizzo S, Zabala L, De Leon E, Nave F. Pharmacologic properties of *Moringa oleifera*. 2: Screening for antispasmodic, anti-inflammatory and diuretic activity. *J Ethnopharmacol*. 1992;36(3):233-7.
- [20] Rao CV, Hussain T, Verma AR, Kumar N, Vijaykumar M, Reddy GD. Evaluation of the analgesic and anti-inflammatory activity of *Moringa concanensis* tender fruits. *Asian J Tradit Med*. 2008;3(3):95-102.
- [21] Santhi K, Sengottuvel R. The antioxidant activity of the methanolic extract of *Moringa concanensis* nimmo. *Int J Adv Interdiscipl Res*. 2016;3:1-5.
- [22] Habtemariam S, Varghese GK. Extractability of rutin in herbal tea preparations of *Moringa stenopetala* leaves. *Beverages*. 2015;1(3):169-82.
- [23] Zafar N, Uzair B, Mena F, Khan BA, Niazi MB, Alaryani FS, et al. *Moringa concanensis*-mediated synthesis and characterizations of ciprofloxacin encapsulated into Ag/TiO₂/Fe₂O₃/CS nanocomposite: A therapeutic solution against multidrug resistant *E. coli* strains of livestock infectious diseases. *Pharmaceutics*. 2022;14(8):1719.
- [24] Mohammed MS, Hafiz AM, Saeed A, Rahimullah S, Sivakumar SM, Emad S, et al. Antidiabetic potential of *Moringa oleifera* Lam. leaf extract in type 2 diabetic rats, and its mechanism of action. *Trop J Pharm Res*. 2021;20(1):97-104.
- [25] Balakrishnan BB, Krishnasamy K, Choi KC. *Moringa concanensis* Nimmo ameliorates hyperglycemia in 3T3-L1 adipocytes by upregulating

- PPAR- γ , C/EBP- α via Akt signaling pathway and STZ-induced diabetic rats. *Biomed Pharmacother.* 2018;103(7):719-28.
- [26] Asgari-Kafrani A, Fazilati M, Nazem H. Hepatoprotective and antioxidant activity of aerial parts of *Moringa oleifera* in prevention of non-alcoholic fatty liver disease in Wistar rats. *S Afr J Bot.* 2020;29(3):82-90.
- [27] Sharma A, Patel S, Pradesh M, Pradesh M. Preliminary phytochemical screening and quantitative analysis of secondary metabolites of *Mentha arvensis* and *Azadirachta indica* screening. *Int J Adv Res Dev.* 2018;3(1):114-8.
- [28] Khandelwal KR. *Practical pharmacognosy.* 12th ed. Pune: Nirali Prakashan; 2004. pp. 146-60.
- [29] Harborne JB. *Phytochemical methods: A guide to modern techniques of plant analysis.* 3rd Edn. Chapman and Hall, London; 1998. ISBN-13: 9780412572708.
- [30] Muharrami LK, Munawaroh F, Ersam T, Santoso M. Phytochemical screening of ethanolic extract: A preliminary test on five medicinal plants on Bangkalan. *J Pena Sains.* 2020;7(2):96-102.
- [31] Estella TF, Akwen NS, Annih MG, Agbor AM, Fomnboh DJ, Edwige TM, et al. Phytochemical screening, evaluation of anti-peptic ulcer activities of aqueous leaf extract of neem *Azadirachta indica* A. Juss (Meliaceae) in wistar rats. *Int Res J of Gastroent Hepatol.* 2022;5(1):1-17.
- [32] Shaikh JR, Patil M. Qualitative tests for preliminary phytochemical screening: An overview *Int J Chem Stud.* 2020;8(2):603-8.
- [33] Singh V, Kumar R. Study of phytochemical analysis and antioxidant activity of *Allium sativum* of Bundelkhand region. *Int Life Sci Res.* 2017;3(6):1451-8.
- [34] Uma KS, Parthiban P, Kalpana S. Pharmacognostical and preliminary phytochemical screening of *Aavaarai Vidhai Chooranam*. *Asian J Pharm Clin Res.* 2017;10(10):111-6.
- [35] Sheel R, Nisha K, Kumar J. Preliminary phytochemical screening of methanolic extract of *Clerodendron infortunatum*. *IOSR J Appli Chem.* 2014;7(1):10-3.
- [36] World Health Organization (WHO). *Quality control methods for medicinal plant materials.* WHO/PHARM/92.559. Geneva: World Health Organization (WHO); 1998. p. 4-46.
- [37] Krishna TA, Krishna TA, Kumuthakallavalli R, Raj VS, Juliet S, Rani TS, et al. Physico-chemical evaluation and biochemical quantification of crude drug powder (stem) of *Chassalia curviflora* (Wall. ex Kurz.) Thwaites; A folk medicinal plant. *J Pharmacogn Phytochem.* 2014;3(4):121-4.
- [38] Wagner H, Bladt S. *Plant drug analysis -A thin chromatography atlas.* 2nd ed. Springer: Verlag Berlin Heidelberg: 1996 first Indian reprint; 2004.
- [39] Kowalska T, Sajewicz M. Thin-layer chromatography (TLC) in the screening of botanicals—Its versatile potential and selected applications. *Molecules.* 2022;27(19):6607.
- [40] Mac Fhionnlaoich N, Ibsen S, Serrano LA, Taylor A, Qi R, Guldin S. A toolkit to quantify target compounds in thin-layer-chromatography experiments. *J Chem Educ.* 2018;95(12):2191-6.
- [41] Madaan R, Bansal G, Kumar S, Sharma A. Estimation of total phenols and flavonoids in extracts of *Actaea spicata* roots and antioxidant activity studies. *Ind J Pharm Sci.* 2011;73(6):666-9.
- [42] Moncayo S, Cornejo X, Castillo J, Valdez V. Preliminary phytochemical screening for antioxidant activity and content of phenols and flavonoids of 18 species of plants native to western Ecuador. *Trends Phytochem Res.* 2021;5(2):92-104.
- [43] Mukharjee P. *Quality control of herbal drugs.* 5th ed. New Dehli: Business horizons; 2002. pp. 160-92.
- [44] Akhtar MS, Rafiullah M, Shehata WA, Hossain A, Ali M. Comparative phytochemical, thin layer chromatographic profiling and antioxidant activity of extracts from some Indian herbal drugs. *J Bioresour Bioprod.* 2022;7(2):128-34.
- [45] Silver J. Let us teach proper thin layer chromatography technique! *J Chem Educ.* 2020;97(12):4217-9.
- [46] Zahiruddin S, Parveen A, Washim K, Parveen R, Ahmad S. TLC-based metabolite profiling and bioactivity-based scientific validation for use of water extracts in AYUSH formulations. *Evid Based Complement Alternat Med.* 2021;12:1-12.
- [47] Borisov R, Kanateva A, Zhilyaev D. Recent advances in combinations of TLC with MALDI and other desorption/ionization mass spectrometry techniques. *Front Chem.* 2021;9:771801.